

PROPERTIES

Full Grain

European Bovine Hides

Thickness - 1.0 /1.2 mm

Hides size - 4 - 5 sq.mtrs

Full Grain

Dry Cycle - 500c

Wet Cycle - 250c

Physical Properties

Flexible Endurance - > 50,000 cycles

Finish Adhesion - > = 2

Tear strength < = 20

Burning behaviour < = 100

Cold cracking 15c


Flamability Properties


Complies to

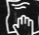
EN1021 - 1/2 (Furniture)


DIN 75200 (Furniture)


LEATHER CARE


 Avoid placing leather in direct sun

 Keep the leather away from direct heat

 Dust regularly with soft & dry cloth

 Clean spots with damp cloth & mild soap

 Dry immediately after the treatment

 Do not rub. use a circular motion towards the centre of the stain

BAB LEATHER PRODUCTS INTL

FACTORY

BAB Leather #162 & 163, SIDCO
Industrial Estate, Thirumudivakkam,
Chennai - 600044, Tamil Nadu, India.

CHENNAI

#43, AMICI building, Kasturi Rangan
Road, Alwarpet, Chennai - 600018,
Tamil Nadu, India.

HYDERABAD

SVS Tower, 3rd Floor, 8-2-293/82/
L/294 A, Road No. 92, MLA Colony,
Banjara Hills, Hyderabad - 500034,
Telangana, India.

Exotic

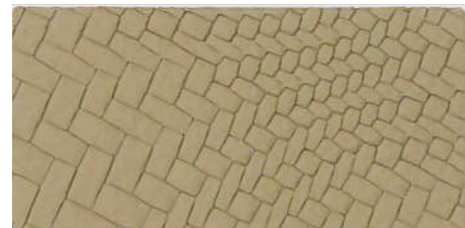
Animal print combines the exotic look of crocodile, ostrich, lizard, snake, stringray etc, with the thickness of 1.0 - 1.2mm, flexibility and quality of cow hide. But we can definitely say that exotic leathers are more distinctive in texture and color, and also in their great value.



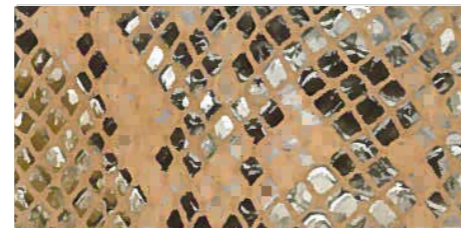
EX01



EX02



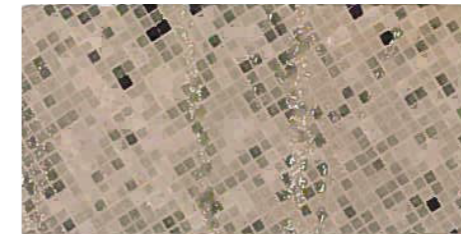
EX03



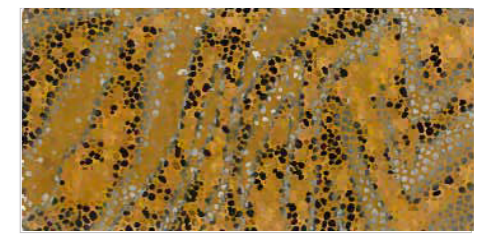
EX04



EX05



EX06



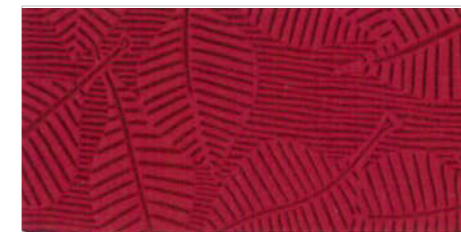
EX07



EX08



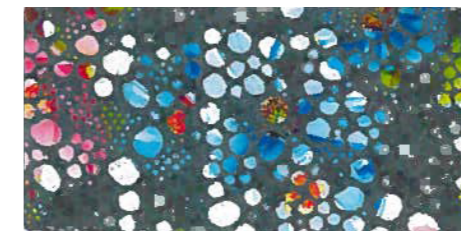
EX09



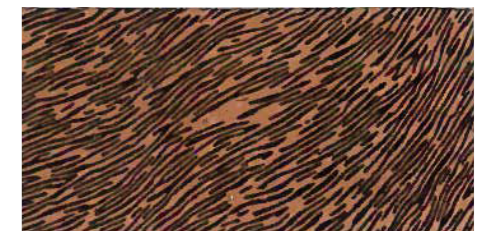
EX10



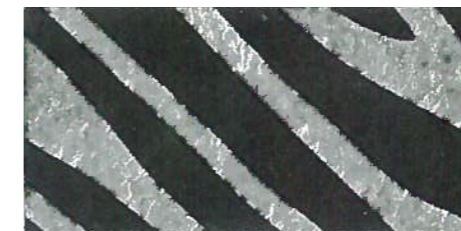
EX11



EX12



EX13



EX14



EX15

